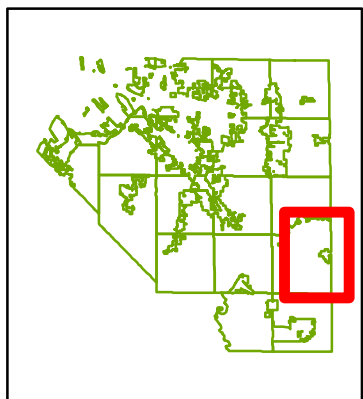


IL REP108

IL REP116

WASHINGTON COUNTY LINE

COUNTY LINE

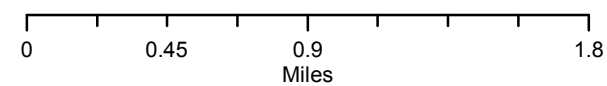


**Saint Clair County, Illinois
Precinct FY2 and Vicinity
(outlined in red)**

Mark Kern
County Board Chairman



Thomas Holbrook
Saint Clair County Clerk



1 inch = 0.62 miles

Disclaimer: St. Clair County does not guarantee the spatial or content accuracy of this map, its precision or merchantability, the appropriate or applicable uses of the information portrayed, or the data contained herein. Any errors or omissions brought to our attention are appreciated and will be corrected. Data are subject to change without notice and updates are made continually to the underlying database.